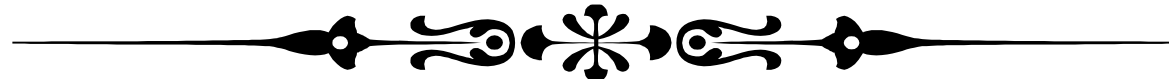




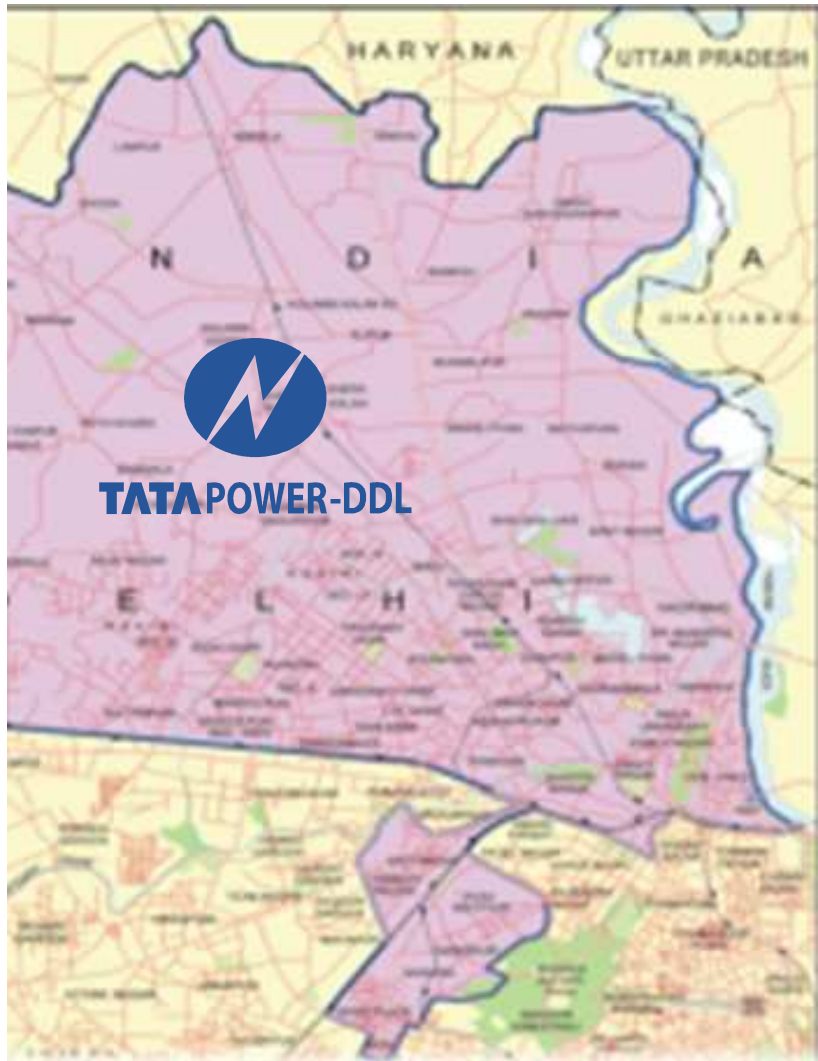
Renewable Purchase Obligation

Issues and Challenges



Mithun Chakraborty
Corporate Strategy and Planning
Tata Power Delhi Distribution Limited

TATA POWER DELHI DISTRIBUTION LIMITED



- Joint Venture of Tata Power and Govt. of Delhi
- License Area: North and North West Delhi (including Ghazipur)
- Consumer Base: 1.3 Million
- Employee Base: 3858
- Peak Load Served: 1500 MW
- ISO 9001, 14001, 18001, 27001 ; SA 8000 Certified

Delhi Renewable Power Obligation Regulations

Regulations notified by DERC on October 1, 2012

mandate - 3.40% (out of which 0.15% Solar) in FY 13 to increase to 9% (out of which 0.15% Solar) in FY 17.

can be met through Own Generation /Purchase from other licensee(s)/ source of RECs

Short term Power Purchase arrangements shall be made with prior approval of DERC; long term PPAs to be approved on case to case basis.

Annual approval on year to year basis if tariff considering capital subsidies/GBI, tax credits etc. is $<$ APPC during a particular year

In order to fulfill RPO, DERC may direct entity to deposit an amount determined on basis of shortfall in units of RPO and forbearance price decided by CERC

as per license conditions if licensee fails to deposit within 15 days of direction

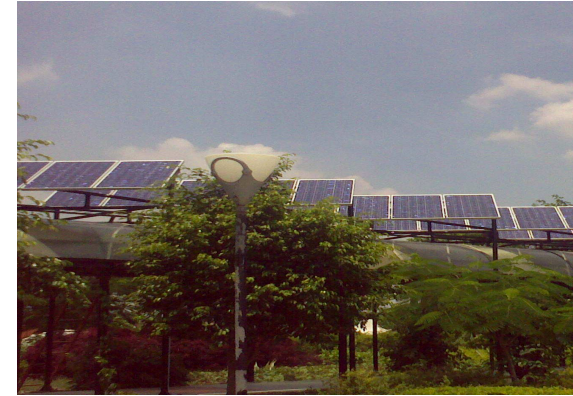
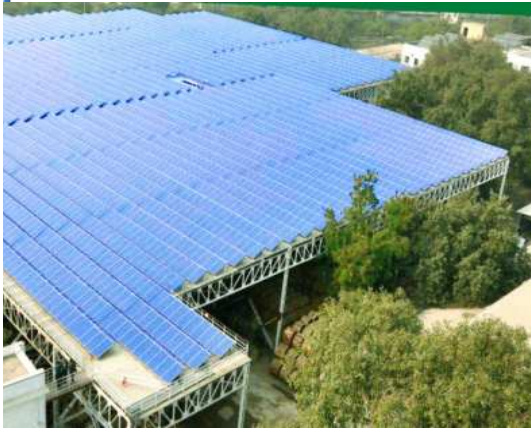
TPDDL Renewable Purchase Obligation

Units Input	Solar	Non Solar	Total	Solar (MUs)	Non Solar (MUs)	Total (MUs)	Equivalent Generation Capacities (MW)				
							Solar	Bio Mass	Small Hydro	Bagasse	Wind
8%							19%	68%	40%	46%	2%
8,000	0.15%	3.25%	3.40%	12	260	272	7	44	74	65	
8,640	0.20%	4.60%	4.80%	17	397	415	10	67	113	99	
9,331	0.25%	5.95%	6.20%	23	555	579	14	93	158	138	
10,078	0.30%	7.30%	7.60%	30	736	766	18	124	210	183	
10,884	0.35%	8.65%	9.00%	38	941	980	23	158	269	234	

TPDDL Solar Journey

Name of Solar plant	Capacity in KW	Status
Corporate Office	3.96	Commissioned on 26 th Dec'08
Benpeid	14.85	Commissioned on 24 th Dec'08
Solar Traffic light Madhuban chowk	1.5	Off grid-Commissioned on 10 th Jan'10
Booth Khurd	54	Commissioned on 18 th Mar'10
Beshav Puram	1000	Commissioned on 16 th Nov'10
Bennet	25	Commissioned on 27 th Dec'10
Barela-7	45	Commissioned on 7 th Dec'10
Deer Water Bawana	43	Commissioned on 19 th April'11
Barela-II DSIDC	60	Commissioned 27 th July'11
TK Grid	25	Commissioned on 5 th Oct'11
G-5 Grid	225	Commissioned on 30 th Mar'12
G-22	50	Commissioned on 30 th Mar'12
G-23	55	Commissioned on 30 th Mar'12
G-24	24	Commissioned on 30 th Mar'12
G-2	24.5	Commissioned on 30 th Mar'12
Total installed Capacity	1650.81	

Snapshot of Solar Projects



Large Solar Photovoltaic project

15 kWp Solar Photovoltaic project



225 kWp Solar Photovoltaic project



Large Solar Photovoltaic project



55 kWp Solar Photovoltaic project

Some Issues

Availability of sufficient renewable capacity/ RECs to meet RPOs

Mode for tie up of Renewable Energy – Competitive Bidding / Bilateral
contract or both

% CUF specified; may be difficult to achieve as per our experience

Position of intrastate Transmission charges and losses on Renewable
Energy

Smart Grid infrastructure to integrate rooftop renewable projects



Thank You